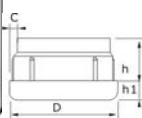
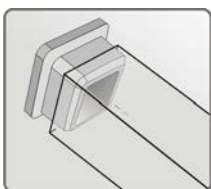
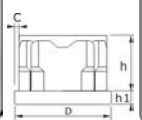


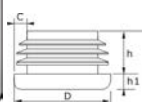
Заглушки пластиковые



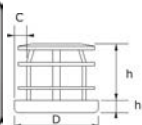
Part NO.	Size (mm)				Material
	D	h	hi	C	
240052	22x22	8.7	4	0.8	HDPE



Part NO.	Size (mm)				Material
	D	h	hi	C	
240049	19x19	10.7	4	1.2	HDPE
240048	22x22	16.7	4	1.2	HDPE
240047	25x25	14.3	4	1.2	HDPE



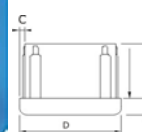
Part NO.	Size (mm)				Material
	D	h	hi	C	
240050	25x25	11	4	1.2-1.5	HDPE



Part NO.	Size (mm)				Material
	D	h	hi	C	
240051	25x25	17.2	3.8	1.2-1.5	LDPE



Part NO.	Size (mm)				Material
	D	h	hi	C	
240045	38x38	9.4	3.3	1.3	HDPE



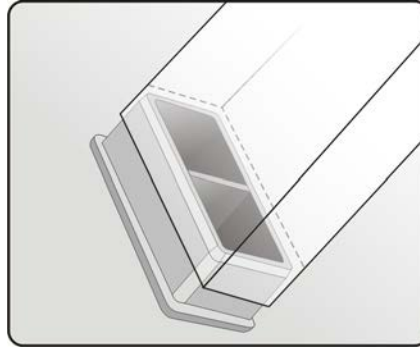
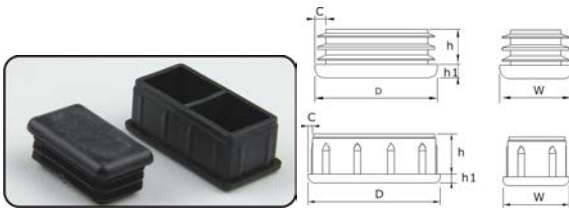
Part NO.	Size (mm)				Material
	D	h	hi	C	
240044	38x38	20	6.2	1.8	HDPE



Part NO.	Size (mm)				Material
	D	h	hi	C	
240060	25.4x25.4	12	14	2.2	HDPE



Part NO.	Size (mm)				Material
	D	h	hi	C	
240057	21.7x21.7	12	10	0.8-1	HDPE



Part NO.	Size (mm)				Material
	D-W	H	h	C	
240067-1	50.8x25.4	15.8	3.3	1.5	HDPE
240069	57.6x25.4	13.8	4.5	1.2-1.5	HDPE
240069-1	38.3x22.8	11.4	4	1.8-2	HDPE



Part NO.	Size (mm)				Material
	D	h	hi	C	
240058	22.2x22.2	11	10	1.2	HDPE



Part NO.	Size (mm)				Material
	D	h	hi	C	
240080	31.8x31.8	12	9.6	1.5	HDPE



Part NO.	Size (mm)				Material
	D	h	hi	C	
240090	27.8x27.8	15.5	9.9	2.2	HDPE



Part NO.	Size (mm)				Material
	D	h	hi	d	
240013-1	10.4	7	1.6	4.3	PA66
240013-2	12	12.2	1.5	7.1	PA66
240013-3	17.8	19	2	7.7	PA66
240013-4	18.8	29	3.2	7.7	PA66

Part NO.	Size (mm)	Material
----------	-----------	----------



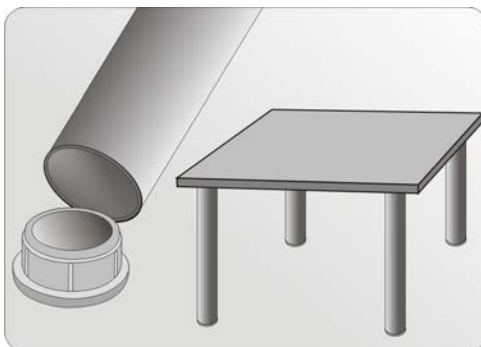
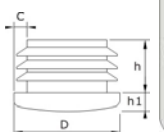
	D	h	hi	d	d1	
240010-1	12.8	10	4.7	6.2	6.5	PVC
240010-2	15.5	10.5	7.2	6.2	6.6	PVC
240010-3	19	9.1	9.3	7.8	8	PVC



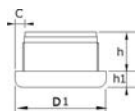
Part NO.	Size (mm)					Material
	D	h	hi	d	d1	
240011-1	12.7	10.5	4.4	6.3	6.6	PVC



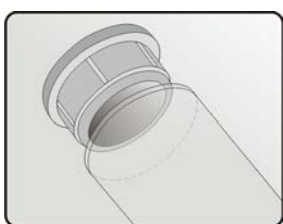
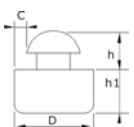
Part NO.	Size (mm)					Material
	D	h	hi	d	d1	
240011-2	12.7	10.3	9.8	6.5	7.1	PVC
240011-3	12.7	9.1	11.2	5.6	6	HDPE



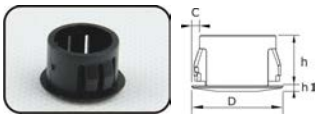
Part NO.	Size (mm)				Material
	D	h	hi	C	
240039	19	10	3.4	2.1-2.5	LDPE
240038	18.5	13	3	0.5-0.8	LDPE
240037	19	12.5	4	1.2-1.5	LDPE
240036	22	12	4	1.2-1.5	LDPE
240035	25	13	4	1.2-1.5	LDPE
240035-1	22	14	7.3	1.2-1.5	HDPE
240034	23	9	2.5	1-1.2	HDPE



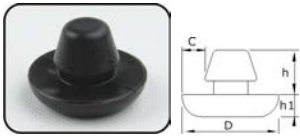
Part NO.	Size (mm)				Material
	D	h	hi	C	
240033	22	9.8	4	2.2	ABS
240032	31.2	11.1	5	2.2	ABS
240031	31.5	11	4.5	1.2	ABS
240030	38.1	9.4	4	1	ABS



Part NO.	Size (mm)				Material
	D	h	hi	C	
240016	15.8	7.5	8.6	4.8	PVC



Part NO.	Size (mm)				Material
	D	h	hi	C	
240016-1	15.8	9.3	1.1	2	PA6



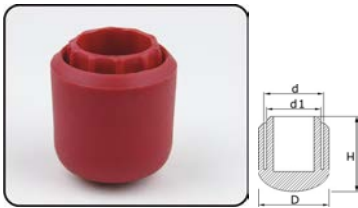
Part NO.	Size (mm)				Material
	D	h	hi	C	
240023	34.5	16	7.8	9	PVC



Part NO.	Size (mm)				Material
	D	h	hi	C	
240089	57	25.6	12.6	1	ABS



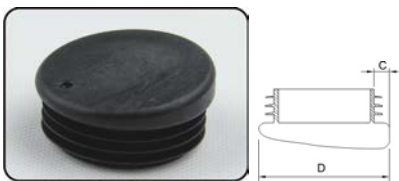
Part NO.	Size(mm)				Material
	D	h	hi	C	
240085	38.1	35.9	25.4	23.2	23.2



Part NO.	Size (mm)				Material
	D	H	d	d1	
240090	52.8	54.5	44.5	42.5	LDPE
240090-1	47.3	53.2	38.1	36	LDPE



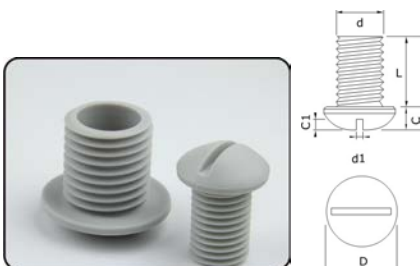
Part NO.	Size (mm)				Material
	D-W	h	hi	C	
240056	33.8x15	#	4	2	HDPE



Part NO.	Size (mm)			Material
	D	C	Angle	
240056-2	47.6	5.4	5°	LDPE



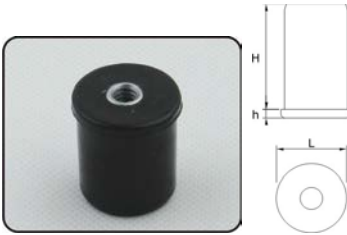
Part NO.	Size (mm)			Material
	D	C	Angle	
240056-1	46.3	3.75	45°	LDPE



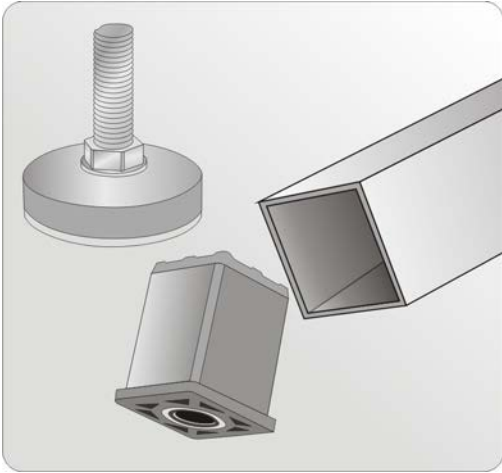
Part NO.	Size (mm)						Material
	D	d	d1	L	C	C1	
240088	38.1	1-1/2"-6	3.8	38.1	12.5	6.8	PP
240087	38.1	1"-8	3.8	38.1	12.5	6.8	PP



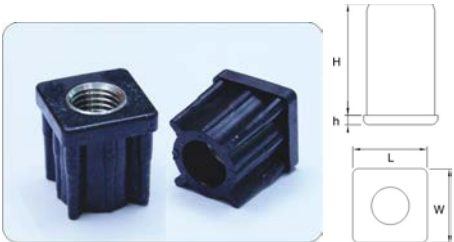
Part NO.	Size (mm)			Material
	D	C	Angle	
240063	20	3.9	18°	ClearABS
240063-1	21.4	3	10°	ClearPC
240063-2	21.4	3	23°	ClearPC



Part NO.	Size (mm)				Material
	Stem thread	L	H	h	
240120	1/4"-20S	25.4	12.7	0.8	PA6



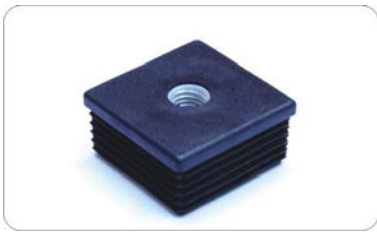
Part NO.	Size (mm)					Material
	Stem thread	L	W	H	h	
240110	1/2"-13S	25.4	25.4	37.3	3.3	PA6
240110-1	1/2"-13S	31.8	31.8	37.3	3.3	PA6



Part NO.	Size (mm)					Material
	Stem thread	L	W	H	h	
240170	M16	30	30	27	6	PA6



Part No.	Base dia.	Stem thread		Material
240130	19mm	M6	1/4"-20S	Nylon/HDPE
240131	22mm	M6	1/4"-20S	Nylon/HDPE
		M8	5/16"-18S	
240132	25mm	M6	1/4"-20S	Nylon/HDPE
		M8	5/16"-18S	
240133	32mm	M8	5/16"-18S	Nylon/HDPE
		M10	3/8"-16S	
240134	35mm	M8	5/16"-18S	Nylon/HDPE
		M10	3/8"-16S	
240135	50mm	M8	5/16"-18S	Nylon/HDPE
		M10	3/8"-16S	
		M12	1/2"-13S	



Part No.	Base dia.	Stem thread		Material
240160	19x19mm	M6	1/4"-20S	Nylon/HDPE
240161	22x22mm	M6	1/4"-20S	Nylon/HDPE
		M8	5/16"-18S	
240162	25x25mm	M6	1/4"-20S	Nylon/HDPE
		M8	5/16"-18S	
240163	32x32mm	M8	5/16"-18S	Nylon/HDPE
		M10	3/8"-16S	
240164	35x35mm	M8	5/16"-18S	Nylon/HDPE
		M10	3/8"-16S	
240165	50x50mm	M8	5/16"-18S	Nylon/HDPE
		M10	3/8"-16S	
		M12	1/2"-13S	